

Treatment Overview

Visit [YESCARTA.com](https://www.yescarta.com) to find more information about any of the topics in this book, watch videos, and hear perspectives from real patients and caregivers.



Please see [Important Facts](#) for additional safety information.

Welcome to your treatment overview

This resource has been created for patients and caregivers who are learning about YESCARTA® treatment.

Your treatment team is your best source of information about treatment. You may also use this book as a quick reference for important topics.



What you can find in this book

What is the treatment process?	4
How does YESCARTA work?	7
What's important to know about YESCARTA?	8
Where can I find support?	10
How was YESCARTA studied?	12

Who is YESCARTA for?

YESCARTA is a prescription medicine used to treat two types of non-Hodgkin lymphoma:

- large B-cell lymphoma when your first treatment did not work or your cancer returned within a year of first treatment, OR when at least two kinds of treatment have failed to control your cancer.
- follicular lymphoma when at least two kinds of treatment have failed to control your cancer.

What is YESCARTA?

YESCARTA is a CAR T-cell therapy. YESCARTA is different than other cancer medicines because it is made from your own white blood cells (T cells), which have been modified to recognize and attack your lymphoma cells.

SELECTED IMPORTANT SAFETY INFORMATION

What are the possible or reasonably likely side effects of YESCARTA?

The most common side effects of YESCARTA include:

- Fever (100.4°F/38°C or higher)
- Low white blood cells (can occur with a fever)
- Low red blood cells
- Low blood pressure (dizziness or lightheadedness, headache, feeling tired, short of breath)
- Fast heartbeat
- Confusion
- Difficulty speaking or slurred speech
- Nausea
- Diarrhea

YESCARTA may increase your risk of getting cancers including certain types of blood cancers. Your healthcare provider should monitor you for this.

These are not all the possible side effects of YESCARTA. Call your healthcare provider about any side effects that concern you. You are encouraged to report negative side effects of prescription drugs to the FDA. Visit www.fda.gov/medwatch or call 1-800-FDA-1088.

What is the treatment process?

CAR T-cell therapy is a multi-step process that includes a one-time infusion of YESCARTA®. Remember that your timeline might vary since your treatment team will make changes to suit your specific needs.

Step 1
CAR T consultation
Time may vary

Step 2
T cell collection
1 day

Step 3
CAR T cells are made
At least 2–3 weeks

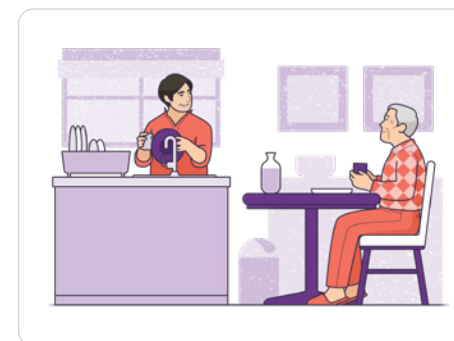
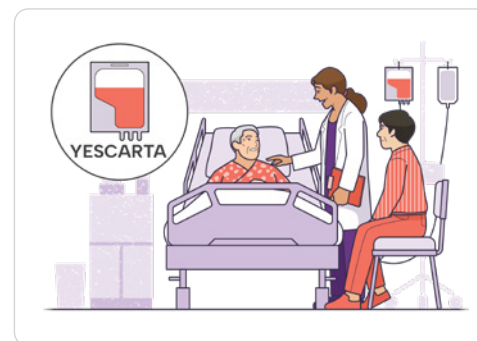
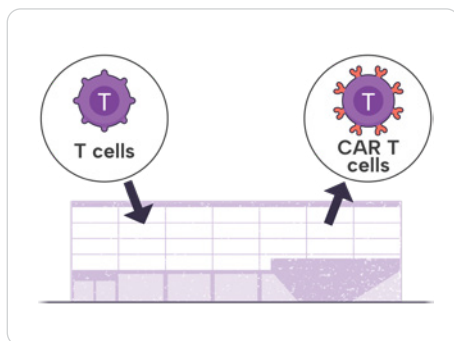
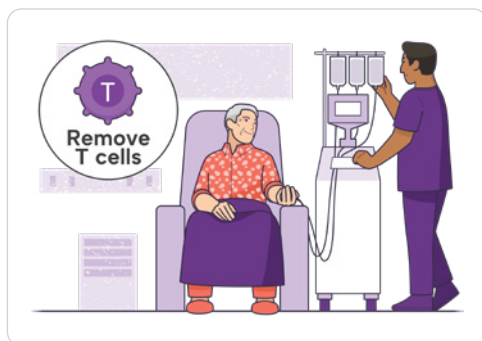
Step 4
Low-dose chemotherapy
3 days

Step 5

YESCARTA infusion and close monitoring
At least 1 week

Step 6
Continued monitoring
Until at least 4 weeks after infusion

Step 7
Recovery at home
Ongoing



Visit [YESCARTA.com/receiving-yescarta](https://www.yescarta.com/receiving-yescarta) or use this QR code to find these steps explained in more detail and in a video format.



SELECTED IMPORTANT SAFETY INFORMATION

What should I avoid after receiving YESCARTA?

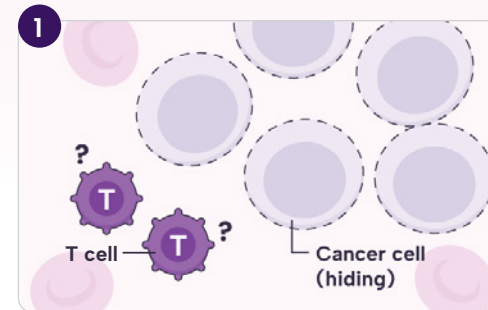
- Do not drive, operate heavy machinery, or do other dangerous things for 8 weeks after you get YESCARTA because the treatment can cause sleepiness, confusion, weakness, and temporary memory and coordination problems.
- Do not donate blood, organs, tissues, or cells for transplantation.

How does YESCARTA work?

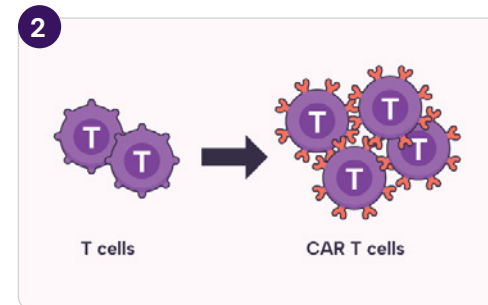
SELECTED IMPORTANT SAFETY INFORMATION

How will I receive YESCARTA®?

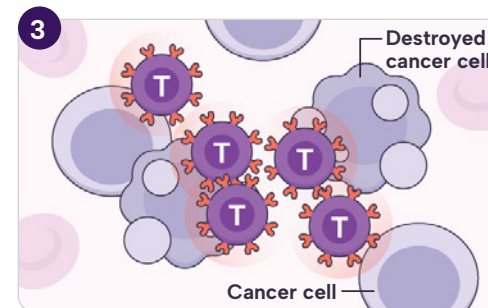
- Since YESCARTA is made from your own white blood cells, your blood will be collected by a process called “leukapheresis” (loo-kah-fur-ee-sis), which will concentrate your white blood cells.
- Your blood cells will be sent to a manufacturing center to make your YESCARTA.
- Before you get YESCARTA, you will get 3 days of chemotherapy to prepare your body.
- When your YESCARTA is ready, your healthcare provider will give it to you through a catheter placed into your vein (intravenous infusion). The infusion usually takes less than 30 minutes.
- You will be monitored where you received your treatment daily for at least 7 days after the infusion.
- You should plan to stay close to a certified healthcare facility for at least 4 weeks after getting YESCARTA. Your healthcare provider will help you with any side effects that may occur.
- You may be hospitalized for side effects and your healthcare provider will discharge you if your side effects are under control, and it is safe for you to leave the hospital.
- Your healthcare provider will want to do blood tests to follow your progress. It is important that you do have your blood tested. If you miss an appointment, call your healthcare provider as soon as possible to reschedule.



T cells are part of your immune system, and help your body fight diseases, from the common cold to cancer. But in some B-cell lymphomas, your T cells cannot recognize the cancer cells, which can allow the cancer cells to grow.



In CAR T-cell therapy, your T cells are modified to have receptors called **Chimeric Antigen Receptors (CARs)**. This turns them into CAR T cells. This is a careful process that usually takes at least 2–3 weeks and has many quality checks.



Once in your body, your new CAR T cells can now recognize certain blood cancer cells and attack them.

Visit [YESCARTA.com/yescarta-at-a-glance](https://www.yescarta.com/yescarta-at-a-glance) to watch a video about how YESCARTA works or to find YESCARTA patient and caregiver stories.



What's important to know about YESCARTA®?



YESCARTA is only given at [certified treatment centers](#), also known as authorized treatment centers. These centers have medical staff who are specifically trained to take care of you throughout the whole CAR T-cell therapy process.



Each step of treatment can take time to organize and prepare for. Talk to your treatment team about planning for CAR T.



YESCARTA may cause side effects that are life-threatening and can lead to death. Your treatment team at the certified treatment center will be working with you to closely monitor and manage side effects. You can also find more information about side effects in the [Important Facts](#).



Some side effect symptoms can be hard for patients to recognize, and this is one of the reasons you will need a dedicated caregiver. If you don't have a dedicated caregiver, you can work with your treatment team to come up with a solution.

Is YESCARTA covered by insurance?

Many insurance plans provide coverage for treatment. Your treatment team will look into your insurance coverage as part of the CAR T consultation process. They will work with your insurance provider to determine what your coverage will be.

You can talk to your treatment team to ask any questions you may have and discuss all the costs associated with YESCARTA.

If you don't have insurance, talk to your healthcare team about options available to you. There are other organizations that may be able to provide support if you are prescribed YESCARTA.



SELECTED IMPORTANT SAFETY INFORMATION

Before getting YESCARTA, tell your healthcare provider about all your medical problems, including if you have or have had:

- Neurologic problems (such as seizures, stroke, or memory loss)
- Lung or breathing problems
- Heart problems
- Liver problems
- Kidney problems
- A recent or active infection

Tell your healthcare provider about all the medications you take, including prescription and over-the-counter medicines, vitamins, and herbal supplements.

Where can I find support?

You don't have to figure everything out by yourself. Your treatment team is the best resource for support throughout treatment.

Our knowledgeable team at Kite is also dedicated to helping answer your questions about support options. You can call them at:



1-844-454-KITE [5483]

Monday–Friday
8 am–9 pm ET
5 am–6 pm PT

Where else can I find support?

Many organizations offer help throughout the process. You can ask your treatment team about other support that might be available.



Financial support



Mental health, emotional support, and peer groups



Travel and lodging support



Physical wellness support



Day-to-day support



Educational support

Visit the website at YESCARTA.com/support-and-resources to find links to a variety of resources in each of these categories and to hear how patients and caregivers have approached support.



Support for caregivers

Caregivers play a major role in supporting the patient, and this is especially true for CAR T treatment.



Being a caregiver can be physically and emotionally demanding. It's common to overlook your own needs, but this can lead to burnout. Remember to take care of yourself, too.

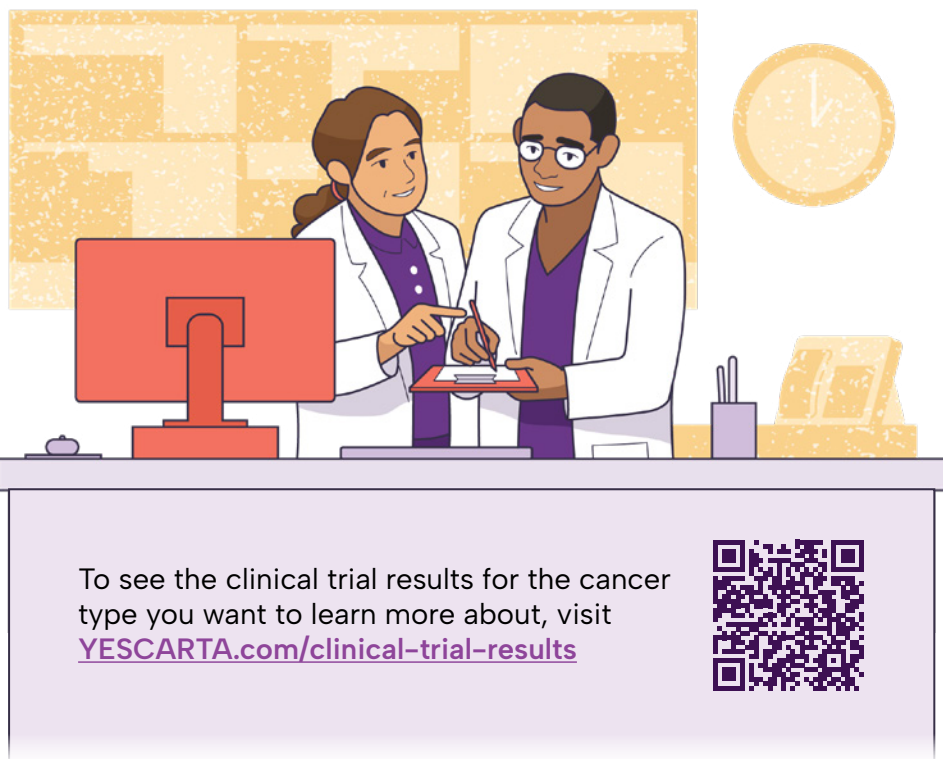
You can ask your treatment team about support that might be available. Many organizations that support caregivers can also be found at the website link below.

Visit YESCARTA.com/caregiver-support to find information about caregiving, caregiver-specific resources, and stories from caregivers.



How was YESCARTA® studied?

YESCARTA has been studied across multiple clinical trials to look at how well it works, how safe it is, and who it might help. The FDA has approved YESCARTA for multiple uses based on the outcomes of these trials.



What are the possible side effects?

Patients in YESCARTA clinical trials also experienced side effects.



Because YESCARTA is a treatment that works on your immune system, there is a risk that your immune system may become overactive and affect the rest of your body in unwanted ways.

Two side effects that many patients have experienced are [Cytokine Release Syndrome](#) (CRS) and [Neurotoxicity](#):

CRS and Neurotoxicity can become life-threatening and can lead to death. Call or see your healthcare provider or get emergency help right away if you get any of the following:

- Fever (100.4°F/38°C or higher)
- Severe nausea, vomiting, or diarrhea
- Difficulty breathing
- Fast or irregular heartbeat
- Chills or shaking chills
- Severe fatigue or weakness
- Confusion
- Dizziness or lightheadedness

It is important to tell your healthcare provider that you received YESCARTA and to show them your YESCARTA [Patient Wallet Card](#). Your healthcare provider may give you other medicines to treat your side effects.

You can learn more about these and other possible side effects by:

- talking to your treatment team
- reading the [Important Facts](#)
- visiting the [Managing side effects](#) page to learn more about how to look out for side effects



Talk to your doctor or visit [YESCARTA.com](https://www.yescarta.com) for more information.

Please see [Important Facts](#) about YESCARTA for additional safety information.